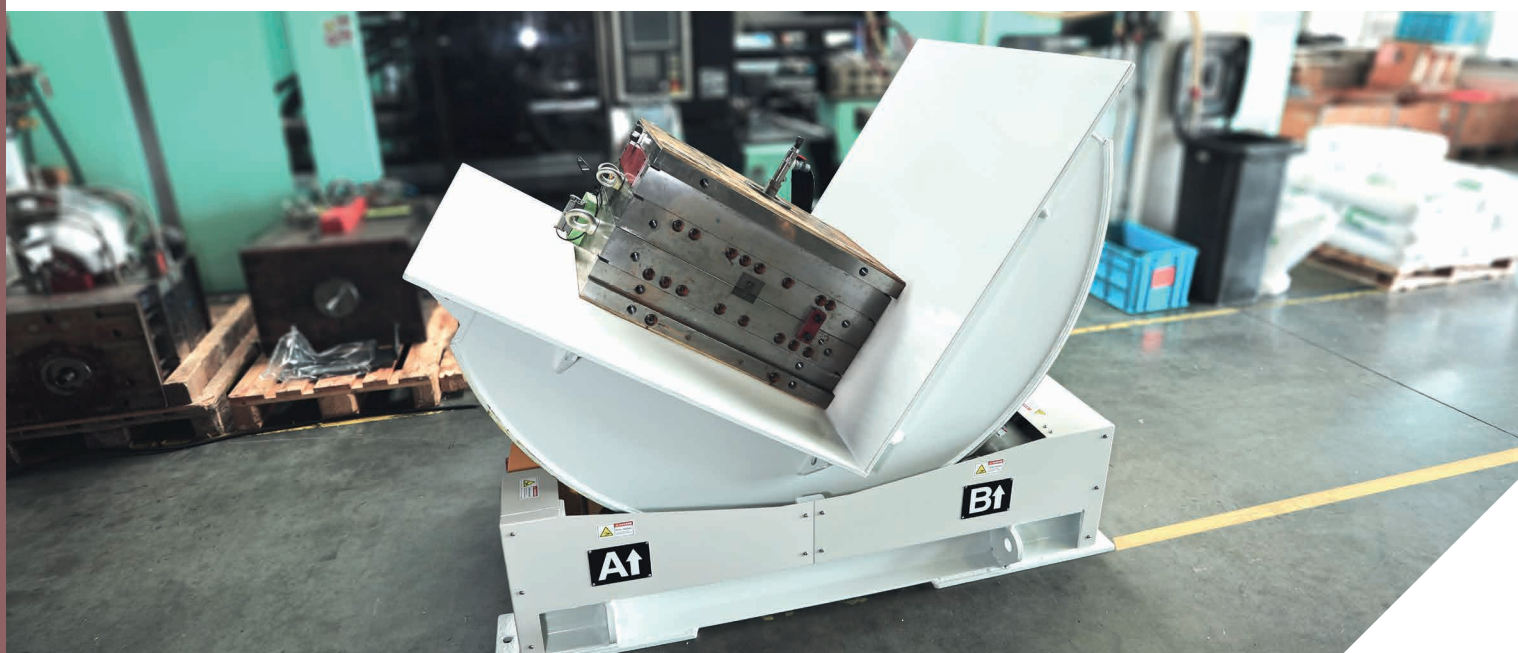
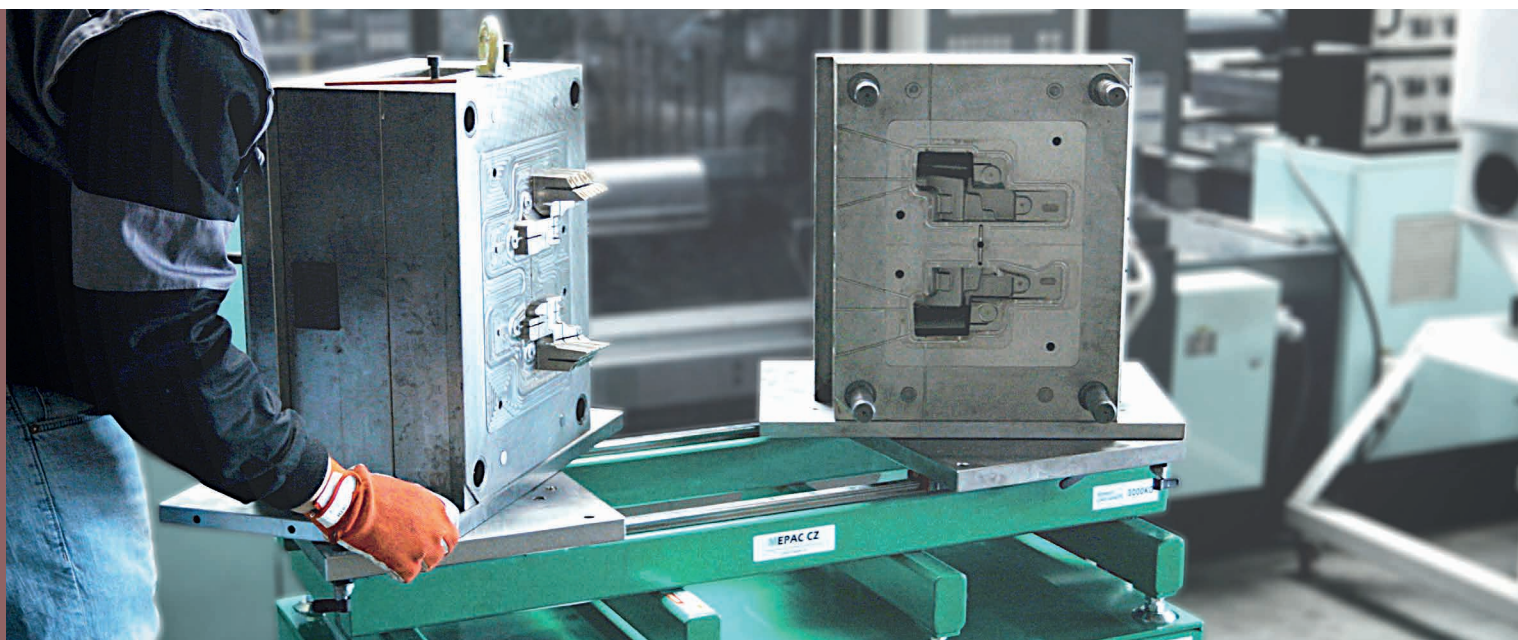
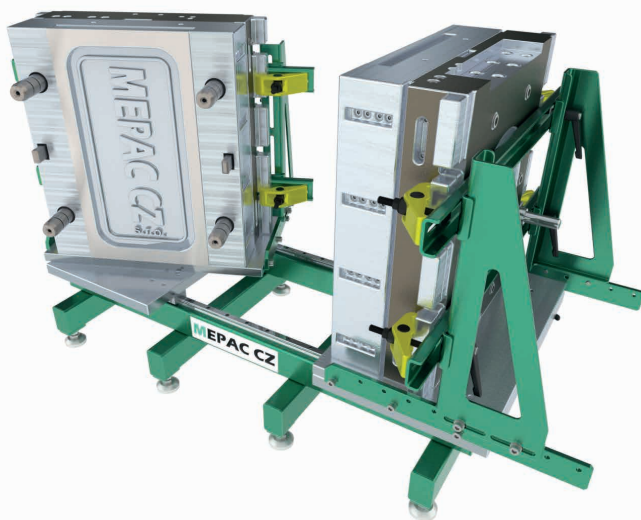


MOLD HANDLING EQUIPMENT



Mold Opening System KFM



A unique, mobile system that will provide you a fast and safety way to open and close molds for repairs and maintenance. The system allows easy rotation of both halves of the mold according to the needs of the operator. Manipulation can be applied to different types of molds. All in a very short time and high safety.

The system can be used in the following areas:

- mold maintenance
- preparation of molds for plastic injection
- mold repair
- assembly of molds for production
- mold cleaning

OPEN – ROTATE – CLOSE
EVERYTHING IN A VERY SHORT TIME!

FEATURES AND BENEFITS

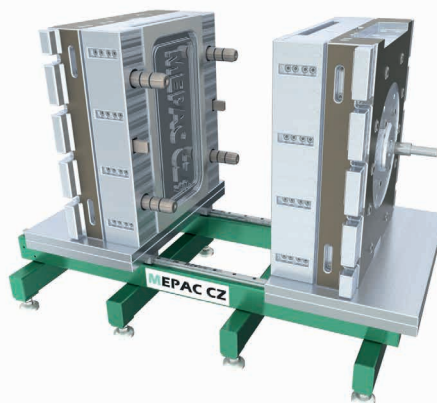
- time savings
- easy handling
- compact equipment
- mold protection
- ergonomic design
- operator safety
- the systems have been tested in practice for a long time

TECHNICAL PARAMETERS

	load capacity	length	width	dimensions of one worktop	weight
KFM 3000	3000 kg	1200 mm	800 mm	595x370 mm	250 kg
KFM 5000	5000 kg	2000 mm	950 mm	950x550 mm	720 kg
KFM 10000	10000 kg	2000 mm	1200 mm	1200x600 mm	1120 kg
KFM 20000	20000 kg	2550 mm	1500 mm	1500x800 mm	1950 kg

Atypical KFM systems according to the customer's request

	load capacity	length	width	height	dimensions of one worktop	weight
KFM 3000 A	3000 kg	2025 mm	1010 mm	815 mm	600x700 mm	570 kg
KFM 3000 C	3000 kg	1255 mm	710 mm	650 mm	595x370 mm	275 kg
KFM 5000 L	5000 kg	2000 mm	1200 mm	380 mm	1200x600mm	955 kg

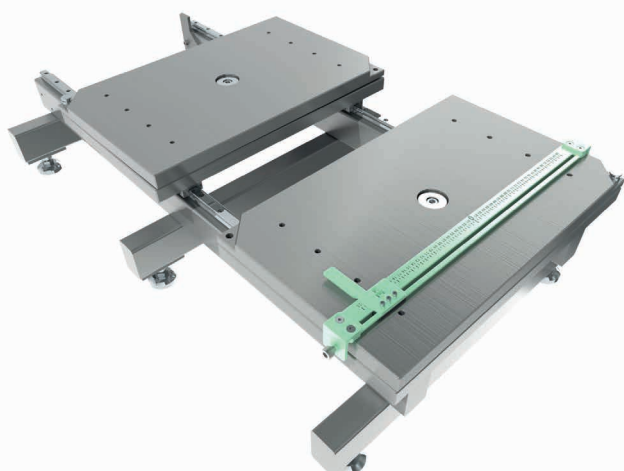


ACCESSORIES

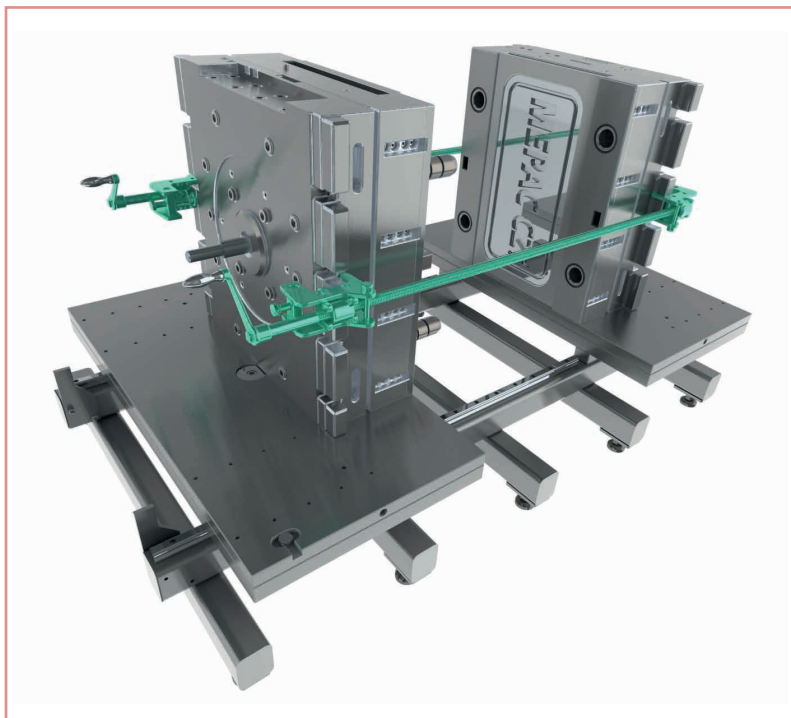
The KFM system also offers a wide range of quality accessories to purchase.



www.manipulace.tech



Trapezoidal Screws



An additional tool, equipped with a handle and a screw (option: 2 pieces), is intended for opening complicated or baked molds that cannot be easily opened.

Principle of system operation:

The screws are fastened to the mold with clamps. The mold is opened by synchronously turning the handles on the screws clockwise. The closing of the mold takes place in the opposite way, by synchronous rotation counterclockwise handle.

FEATURES AND BENEFITS

- low weight and easy handling
- simple and robust construction
- fast and efficient way to open molds
- quick release system
- possibility of settings for different types of molds
- trapezoidal screws can be mounted directly on the mould or on the support profile system

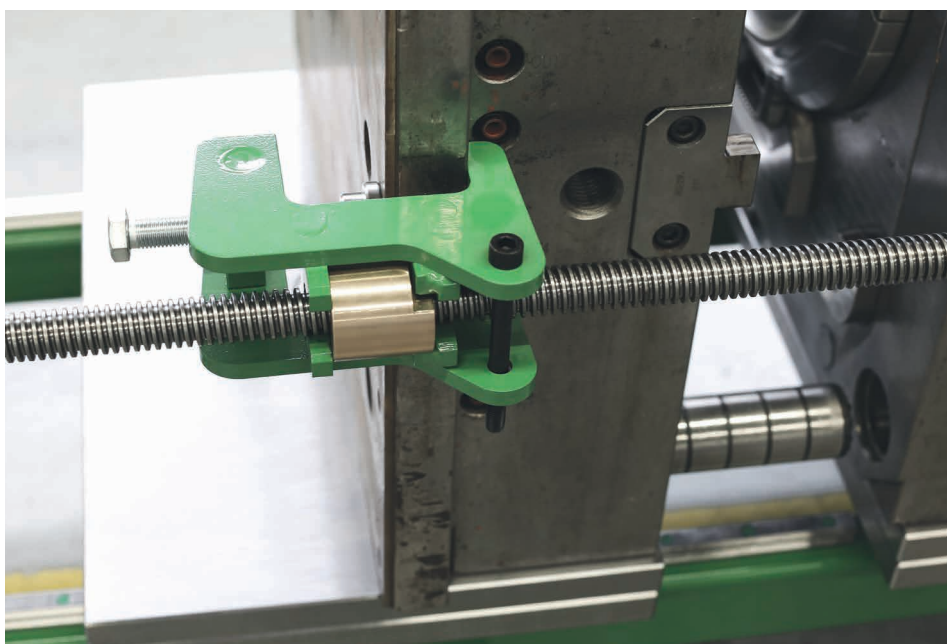
TECHNICAL PARAMETERS

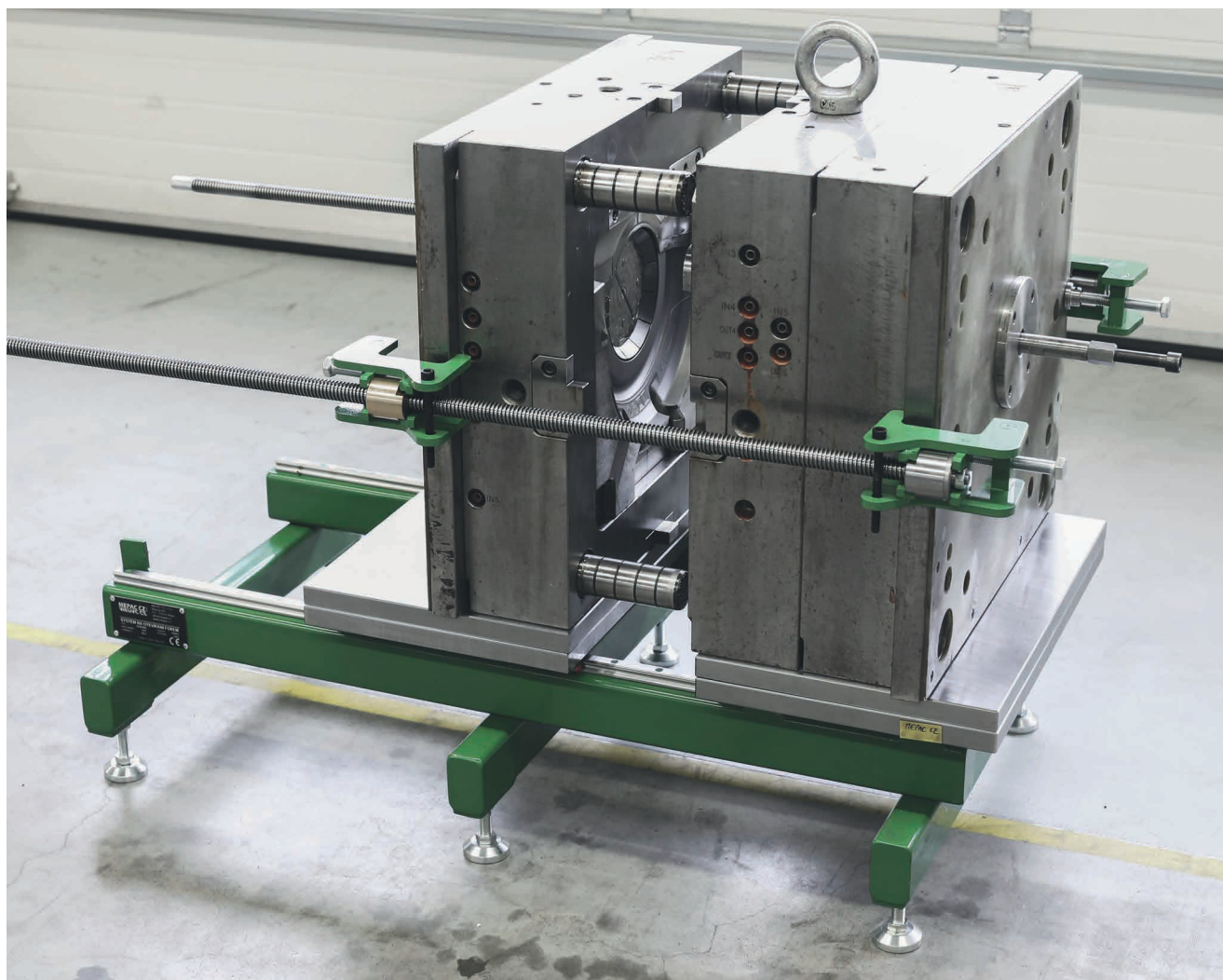
TRAPEZOIDAL SCREW FOR KFM SYSTEMS

TR 24x5 - length 1400 mm
~ 1300 mm



Scan the QR code
to watch our video





Mold Turner - KC series



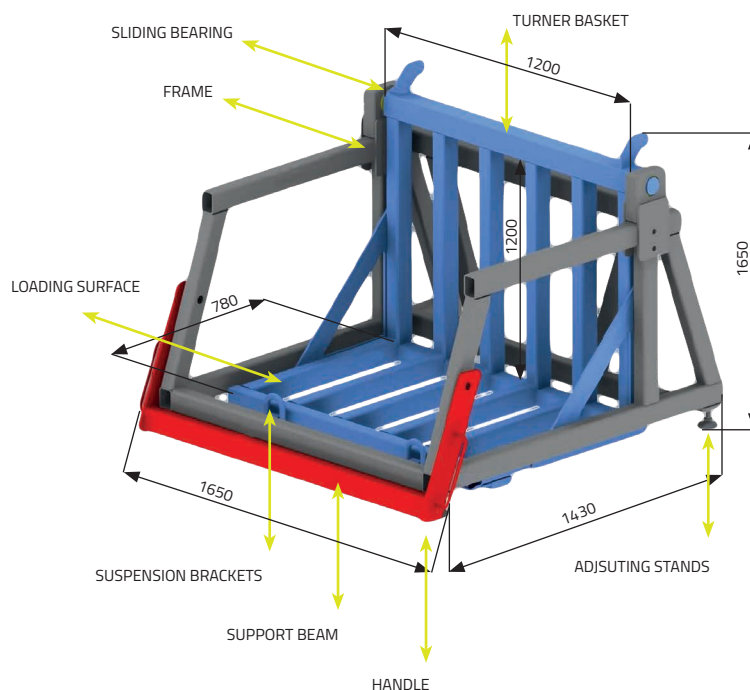
Equipment designed for safe turning of the mold by 90°, which allows turning molds weighing up to 5/7 tons. The use of a lifting device is needed for the purpose of handling.



Scan the QR code to watch our video

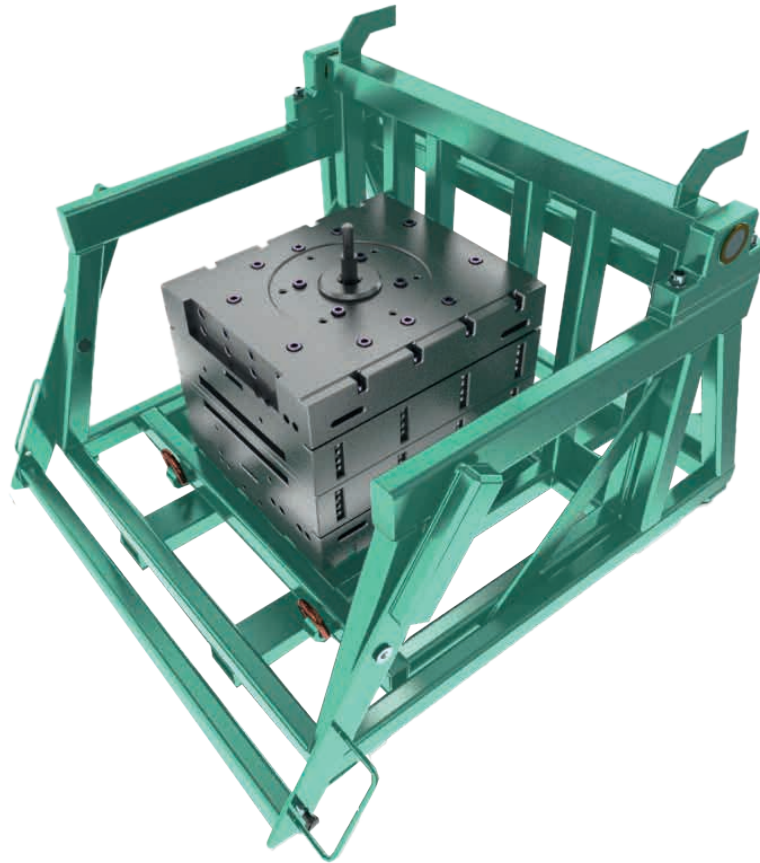
MANIPULATION

The device is designed for handling by tilting the load by 90°. The load of the maximum weight indicated as the load capacity of the device shall be placed on the loading surface of the turning basket. By means of suitable lashings attached to the two suspension brackets and a lifting device, the turning basket shall be lifted and thus turned to the upper position. The turning basket is then secured by means of the support beam by turning it into the upper position. The inverted load thus secured can be folded down from the device.



TECHNICAL PARAMETERS

Model	Weight (kg)	Load capacity (t)	Basket dimension (mm)	Overall dimensions (mm)
KCP 5000	490	5	1235 x 855 x 855	1650 x 1430 x 1650
KCP 7000	530	7	1235 x 855 x 855	1650 x 1430 x 1650
KCP 5000 L	515	5	1250 x 1200 x 857	1718 x 1532 x 1130
KCP 7000 L	555	7	1250 x 1200 x 857	1718 x 1532 x 1130



Hydraulic Damped Turner- series KCP / KCH



Type KCP

The mold turner from the KCP series is a device for safe turning of molds by 90°. The device is working with hydraulic damping so that process of turning is really smooth and safe without undesirable shocks in critical positions. The manipulation of KCP type doesn't work without lifting device.

Type KCH

Type KCH is based on KCP turner but is also driven with its own hydraulic unit with an electric motor so that the entire system is self-sufficient. No additional equipment is required.

FEATURES AND BENEFITS

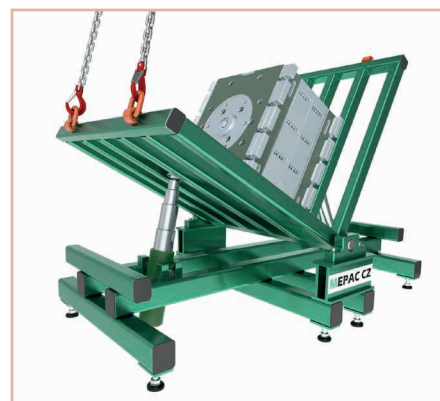
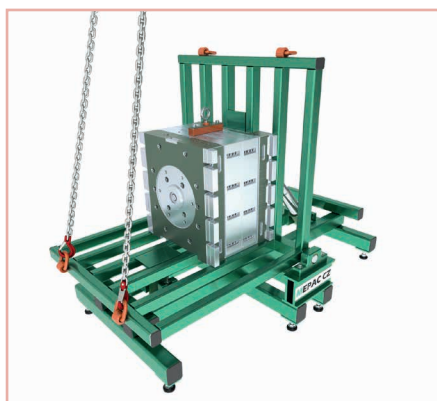
- unique hydraulic damping system
- KCH type has own driver for rotate
- space and operating cost savings
- simple control
- efficient use of space
- easy handling of the entire device



Scan the QR code
to watch our video

TECHNICAL PARAMETERS

Model	Weight (kg)	Load Capacity (t)	Basket dimensions (mm)	Overall dimensions (mm)
KCP 5000	700	5	1200 x 1200 x 1200	2345 x 1410 x 1770
KCP 10000	830	10	1360 x 1360 x 1200	2650 x 1410 x 2000
KCP 15000	1120	15	1600 x 1600 x 1500	3150 x 1760 x 2370
KCH 10000	913	10	1360 x 1360 x 1200	2650 x 1510 x 2000



Drum Turner - series KCB



The mold turner from the KCB series is a device for safe turning of molds by 90 °. The device allows you to turn the molds into weighing 40 tons.

The device is completely driven by its own electric motor contents chain gear which provides a smooth turning process.

FEATURES AND BENEFITS

- space and operating cost savings
- small instalation dimensions



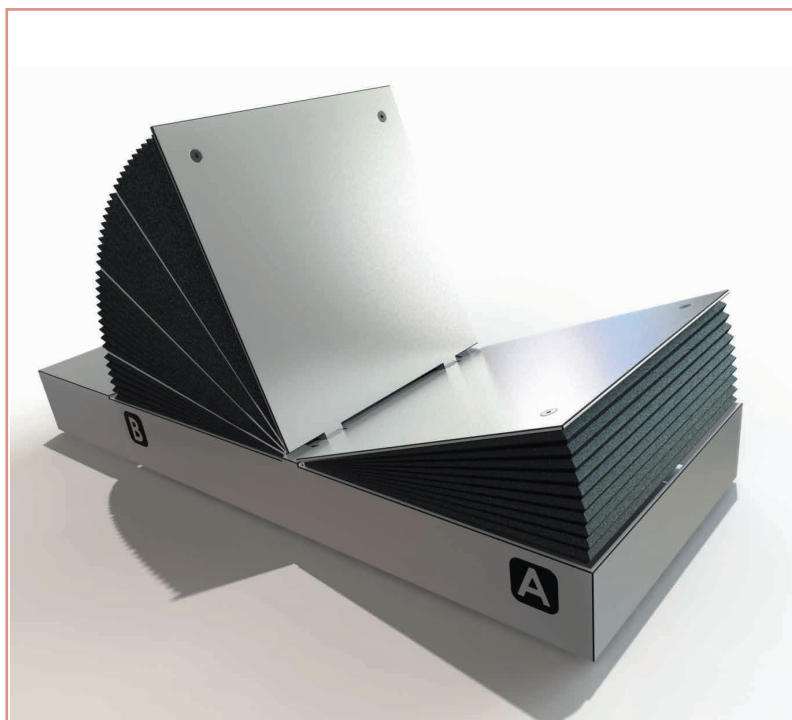
Scan the QR code
to watch our video

TECHNICAL PARAMETERS

Model	Load Space (mm)	Base Height (mm)	width x lenght (mm)	Height (mm)	Load Capacity (t)
KCB-5	1200x1200	600	1200x1800	1800	5
KCB-10	1300x1300	650	1300x1900	1900	10
KCB-15	1500x1500	850	1500x2300	2300	15
KCB-20	1800x1800	950	1800x2700	2700	20
KCB-30	2000x2000	1050	2000x2900	2900	30
KCB-40	2200x2200	1200	2200x3400	3400	40



Wing Turner - KCE series



The mold turner from the KCE series is a device for safe turning of molds by 90 °. The device allows you to turn the molds up to 40 tons. This turner is driven by a hydraulic unit with its own oil circulation. The hydraulic unit is driven by an electric motor.



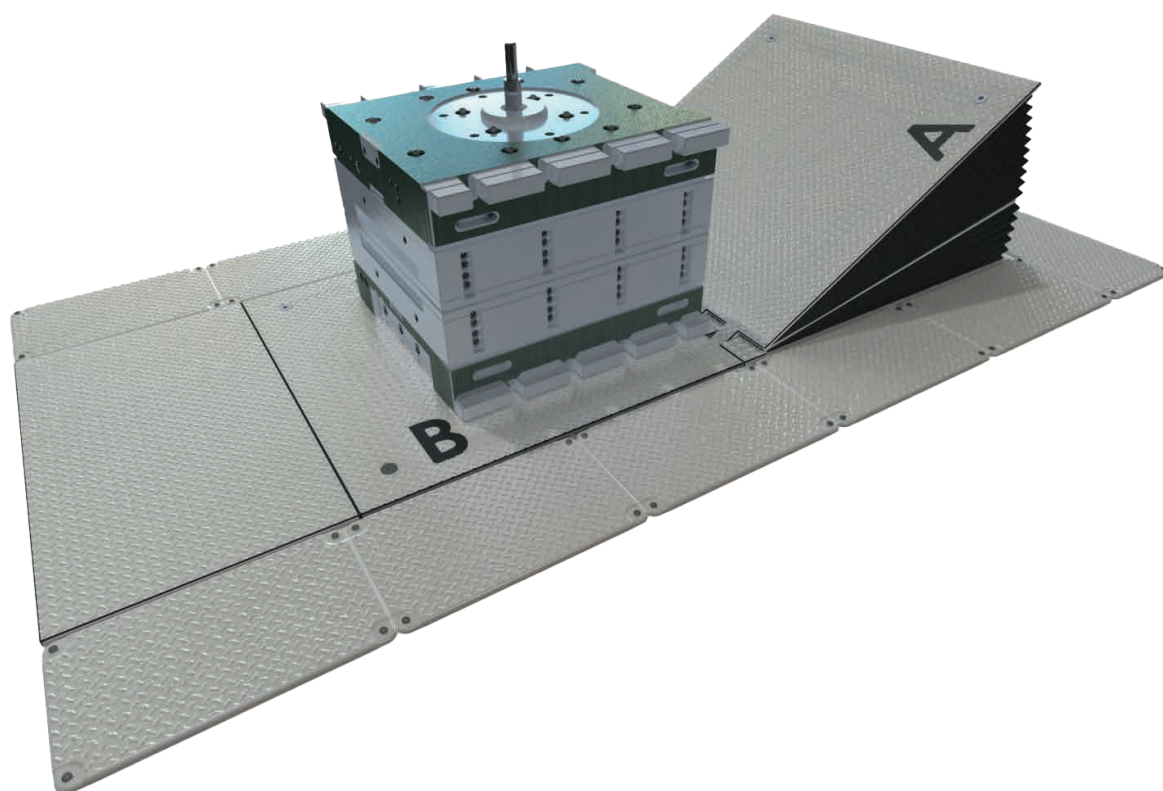
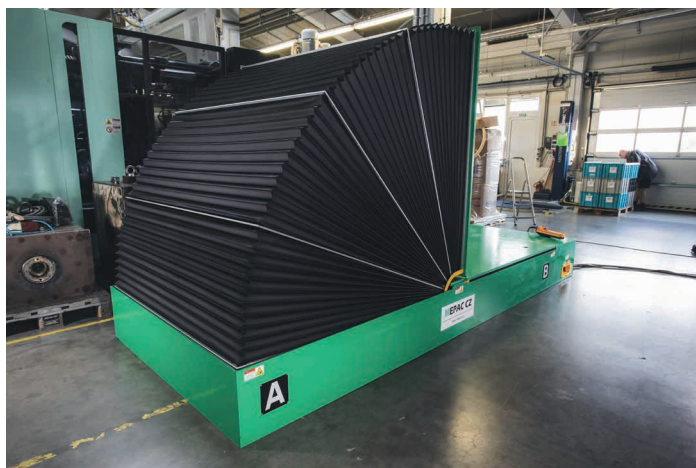
Scan the QR code
to watch our video

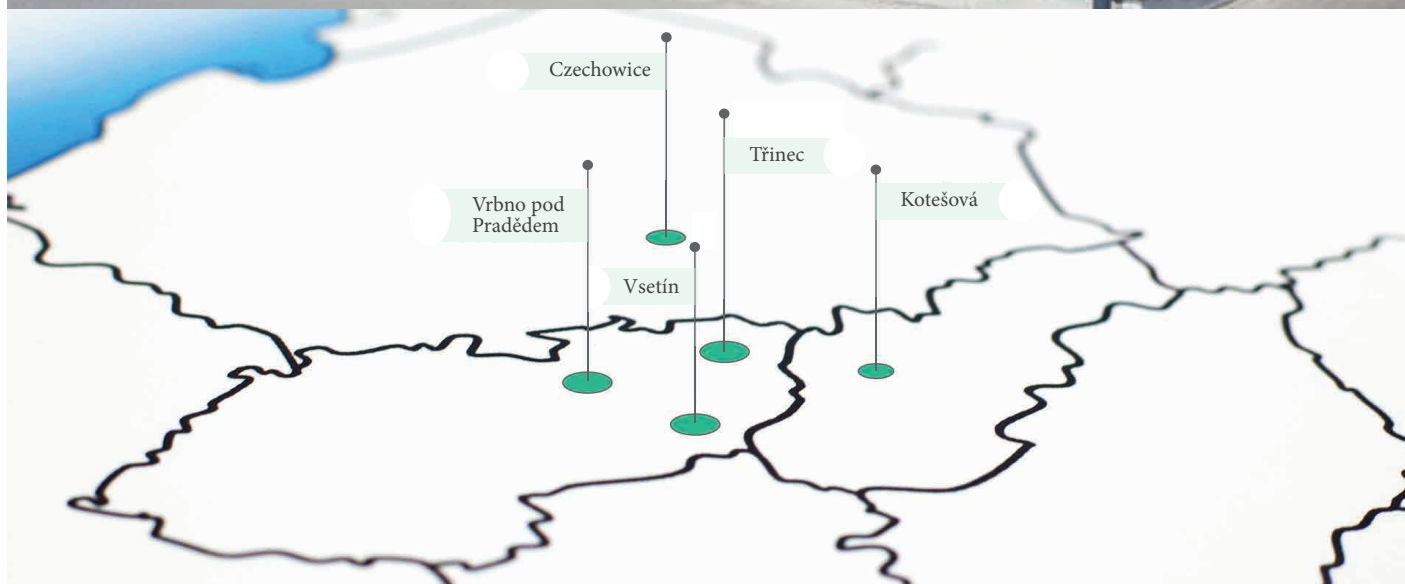
FEATURES AND BENEFITS

- compact flat design
- type KCE-4020 (load capacity 40tons) is only 450 mm height
- space and operating cost savings
- simple control
- maximum safety for operator
- efficient use of space
- easy handling of the entire device
- the work surface can also be used for assembly work on molds
- the device can be built into the floor

TECHNICAL PARAMETERS

Model	Loadspace (mm)	Overall Dimensions (mm)	Load Capacity (t)
KCE-0510	1000 x 1000	1000 x 275 x 2650	5
KCE-1012	1200 x 1200	1200 x 350 x 3000	10
KCE-2016	1600 x 1600	1600 x 400 x 3950	20
KCE-3018	1800 x 1800	1800 x 450 x 4450	30
KCE-4020	2000 x 2000	2000 x 450 x 4800	40





MEPAC CZ, s.r.o.	tel. /mob.	e-mail
HEAD OFFICE TŘINEC Nebory 547 739 61 Třinec www.mepac.cz	tel.: 558 348 112 mob.: 603 515 357 (shop) mob.: 776 086 591 (shop) mob.: 773 784 101 (workshop)	info@mepac.cz
BRANCH OFFICE – VSETÍN Industrial area Jasenice objekt 6 755 01 Vsetín	tel.: 571 417 771 mob.: 739 075 567 (production) mob.: 739 366 619 (production) mob.: 739 453 809 (shop) mob.: 608 710 904 (shop)	info.vsetin@mepac.cz
BRANCH OFFICE – VRBNO Zlatohorská 648 739 26 Vrbno p. Pradědem	tel.: 554 725 305 mob.: 603 507 946 (shop) mob.: 739 204 755 (shop) mob.: 775 569 917 (workshop) fax: 554 725 035	info.vrbno@mepac.cz
BRANCH OFFICE – POLAND Czechowice - Dziedzice	mob.: +48 513 041 157	bak@mepac.cz

Foreign offices:
Slovakia - **MEPAC SK, s.r.o.**, subsidiary company, Kotešová,
www.mepac.sk
tel.: +421 907 077 707