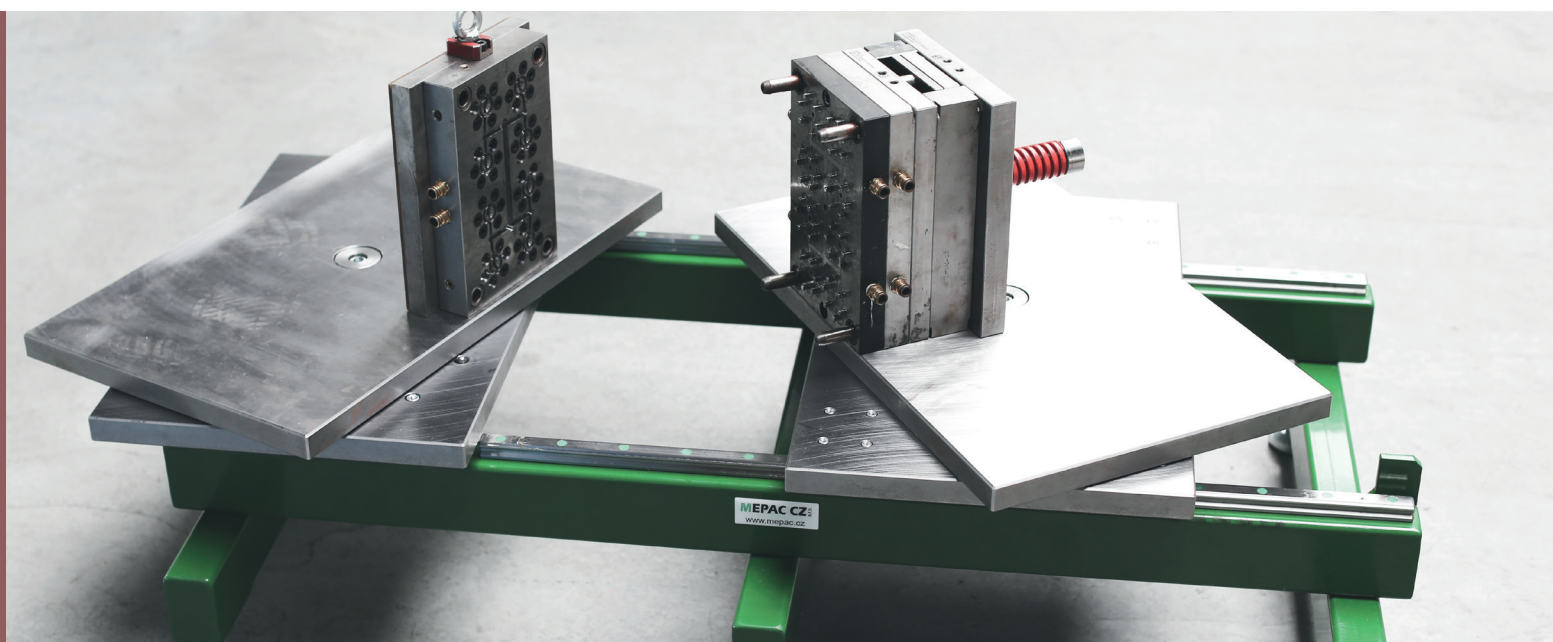


MOLD HANDLING EQUIPMENT



Mold Opening System KFM



A unique, mobile system that will provide you a unique opportunity to open and close molds. The system allows easy rotation of the mold according to the needs of the operator. Manipulation can be applied to different types of molds. All in a very short time.

The system can be used in the following areas:

- mold maintenance
- preparation of molds for plastic injection
- mold repair
- assembly of molds for production
- mold cleaning

OPEN – ROTATE – CLOSE
EVERYTHING IN A VERY SHORT TIME!

FEATURES AND BENEFITS

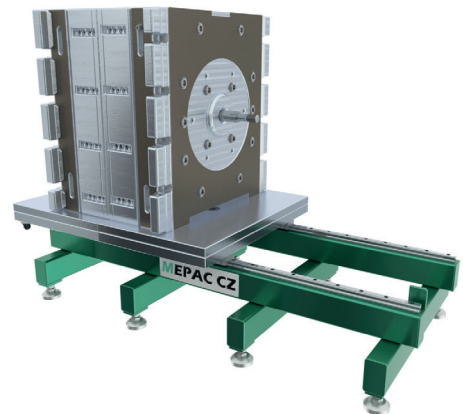
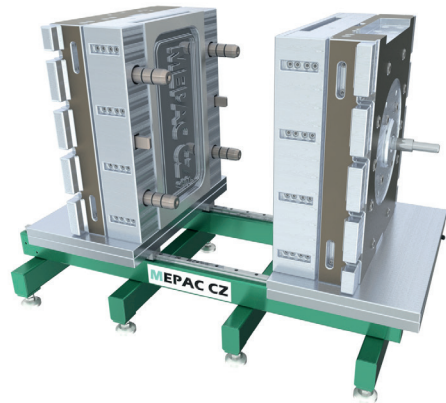
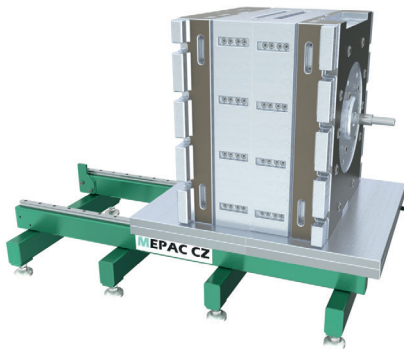
- time savings
- easy handling
- compact equipment
- mold protection
- ergonomic design
- operator safety
- the systems have been tested in practice for a long time and are also certified for weight loading

TECHNICAL PARAMETERS

	load capacity	length	width	dimensions of one worktop	weight
KFM 3000	3000 kg	1200 mm	800 mm	595x370 mm	250 kg
KFM 5000	5000 kg	2000 mm	950 mm	950x550 mm	720 kg
KFM 10000	10000 kg	2000 mm	1200 mm	1200x600 mm	1120 kg
KFM 20000	20000 kg	2550 mm	1500 mm	1500x800 mm	1950 kg

Atypical KFM systems according to the customer's request

	load capacity	length	width	height	dimensions of one worktop	weight
KFM 3000 A	3000 kg	2000 mm	700 mm	810 mm	600x700 mm	570 kg
KFM 5000L	5000 kg	2000 mm	1200 mm	380 mm	1200x600 mm	955 kg

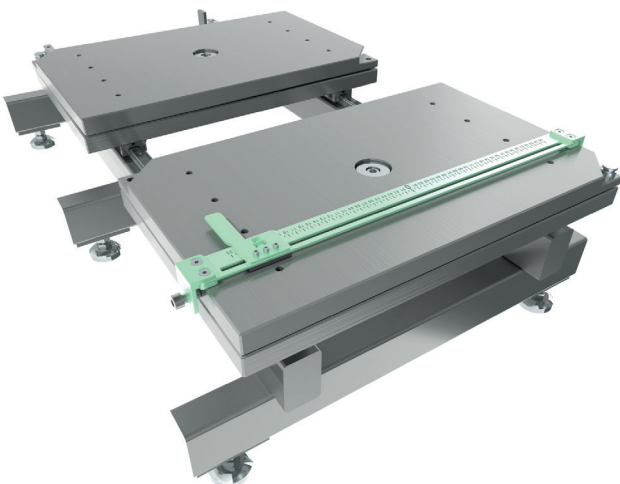


ACCESSORIES

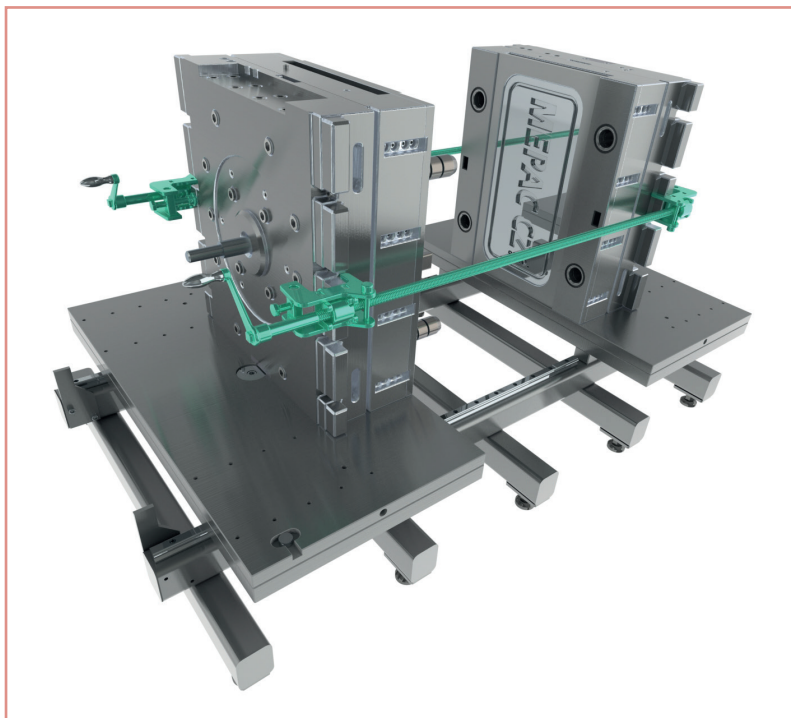
The KFM system also offers a wide range of quality accessories to purchase.



www.manipulace.tech



Trapezoidal Screws



An additional tool, equipped with a handle and a screw (option: 2 pieces), is intended for opening complicated or baked molds that cannot be easily opened.

Principle of system operation:

The screws are fastened to the mold with clamps. The mold is opened by synchronously turning the handles on the screws clockwise. The closing of the mold takes place in the opposite way, by synchronous rotation counterclockwise handle.

FEATURES AND BENEFITS

- low weight
- easy handling
- simple and robust solution
- fast and efficient way to open molds
- ariability of settings for different types of molds

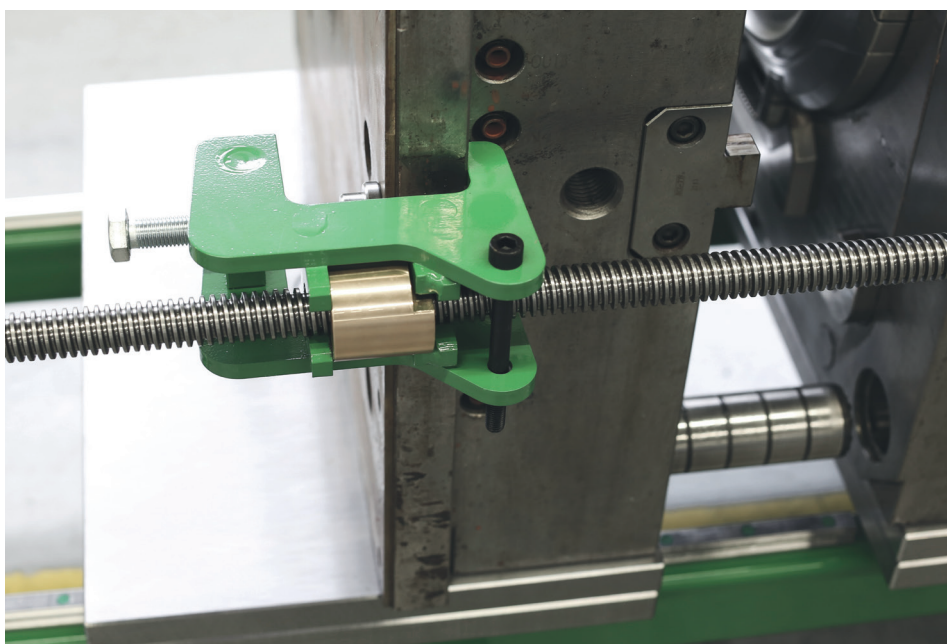
TECHNICAL PARAMETERS

TRAPEZOIDAL SCREW

KFM 5000

TR 24x5 - length 1400 mm

~ 1300 mm





Electric Opening of Molds



Electric opening of injection molds. Opening processes are often physically demanding or even impossible, and therefore this system has been developed so that no complications arise during opening.

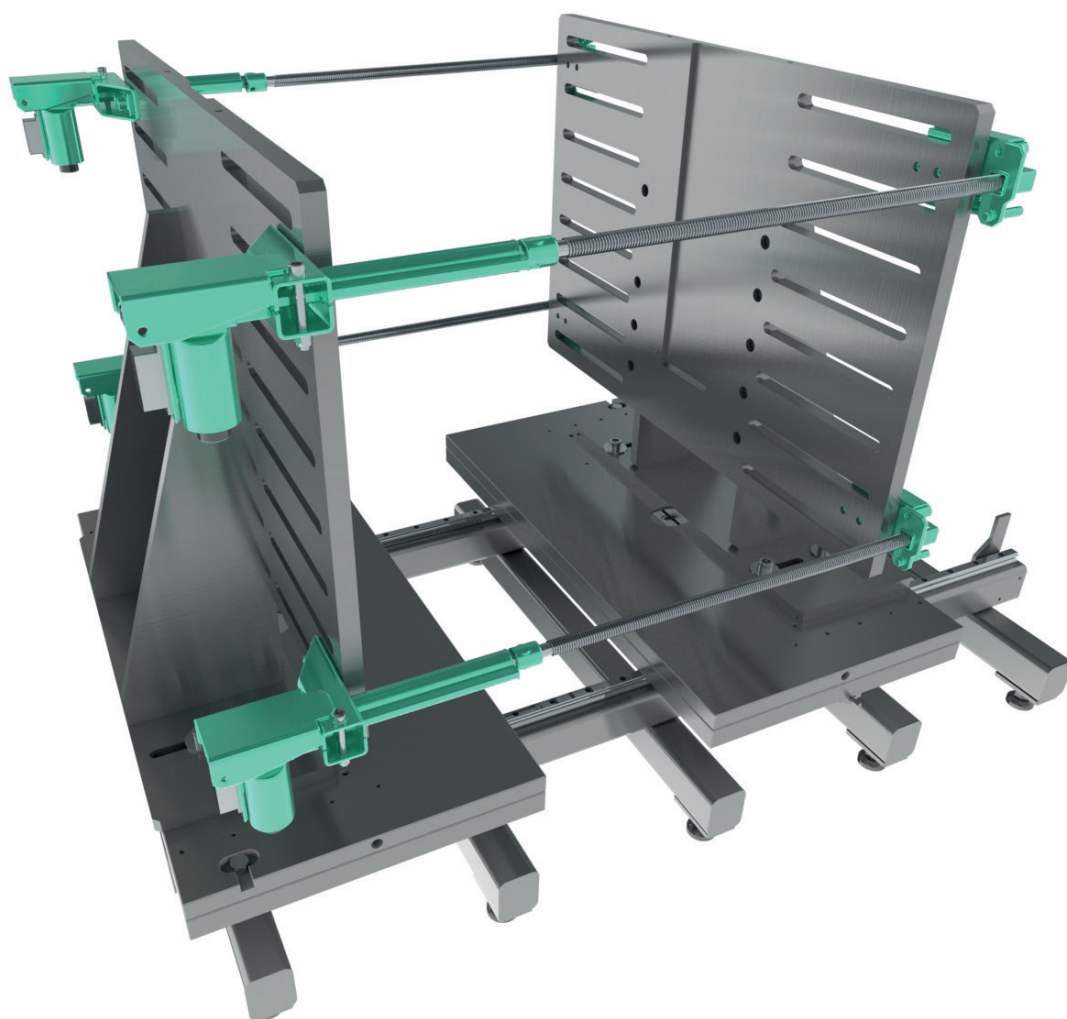
The device consists of a control unit, four opening / closing modules and one controller. Each of the modules has two clamping elements for mounting on the mold and one lifting gear with a motor. The motors are powered by 24V and are electronically synchronized by the control unit, which means that the rotation of the trapezoidal screws in the opening modules is uniform.

FEATURES AND BENEFITS

- Improved version of manual mold opening system
- durable construction
- operation possible by one worker
- smooth opening of molds
- variability of settings for different types of molds

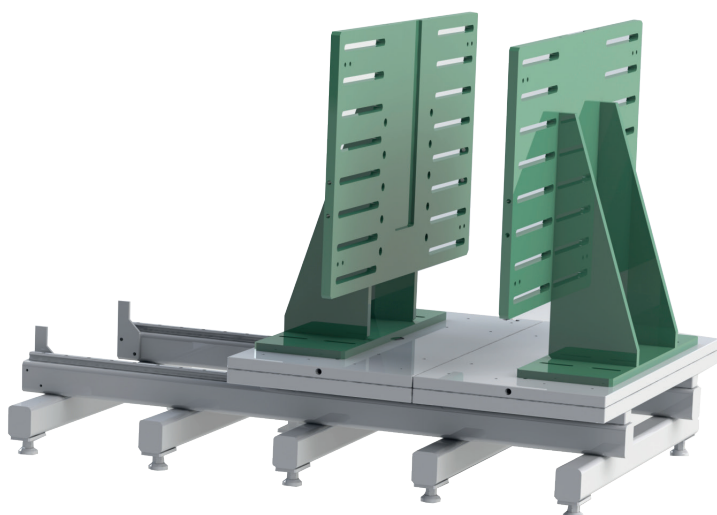
TECHNICAL PARAMETERS

Workforce	4 x 6000 N
Working Range	150 mm (after relocating the pipe, it can be widened by 150mm)
Motor Supply	24 V AC/50 Hz
Electronics Power Supply	230 V AC/50 Hz
Max. Motor Current	2 x 5,8 A
Max. Distance Between Base Plates	800 mm



COMPATIBILITY

- the device is intended only for KFM 10000 with support plates



www.manipulace.tech

Mold Turner - KC series



Equipment designed for safe turning of the mold by 90 °, which allows turning molds weighing up to 5 tons. The use of a lifting device is essential for the purpose of handling.

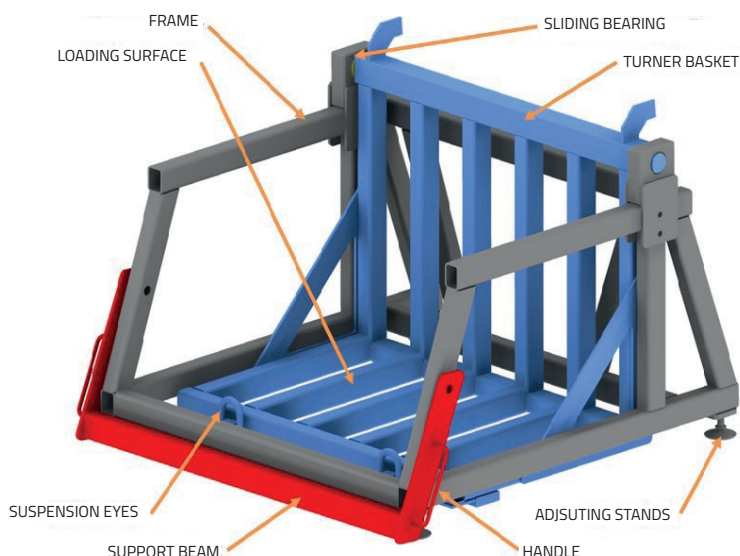
MANIPULATION

The device is designed for handling consisting in overturning the load by 90 °.

The load of maximum weight, stated as the load capacity of the device, is placed on the loading surface of the turner basket so that the load is placed with the tilted edge in the corner of the turner basket.

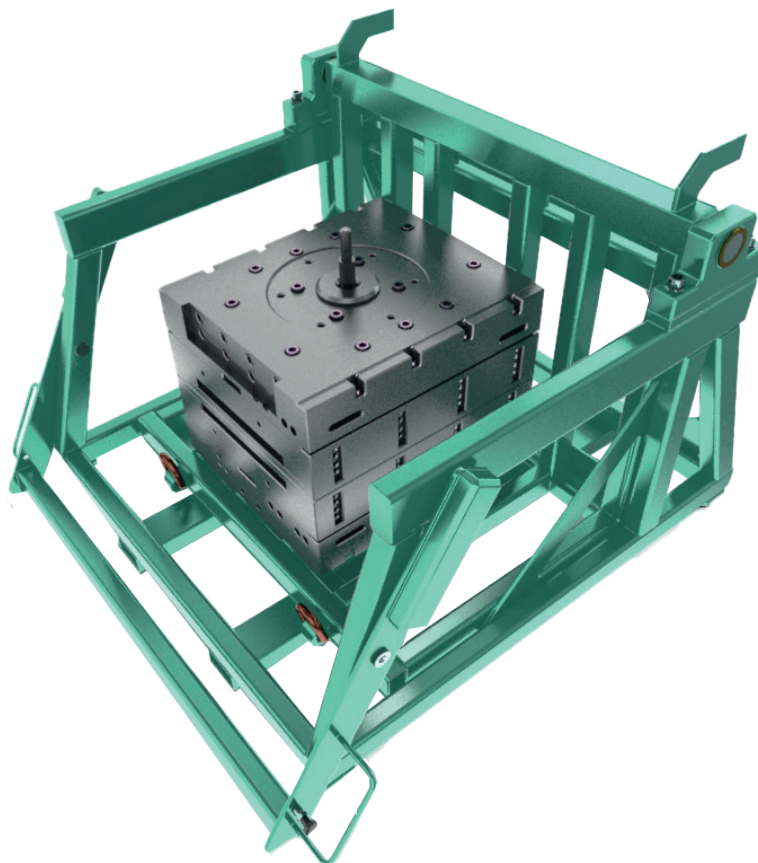
By means of a suitable tying means connected to both suspension eyes and by means of a lifting device, the lifting and thus turning of the turner basket is carried out to the upper position. Subsequently, the turner basket is secured by means of a support beam by turning it to the upper position.

The inverted load can be folded down from the equipment thus secured.

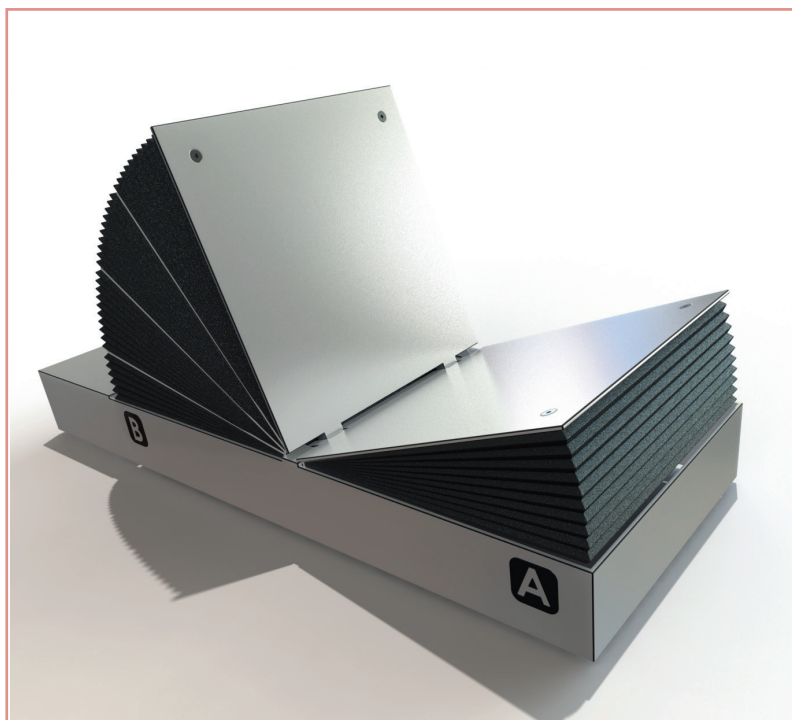


TECHNICAL PARAMETERS

Type	KC 5000
Dimensions	1500 x 1400 x 1000 (l x w x h) [mm]
Weight	450 kg
Load Capacity	5000 kg
Material	Steel construction, welded from thick-walled closed profiles
Necessary Device	Lifting equipment



Wing Turner - KCE series

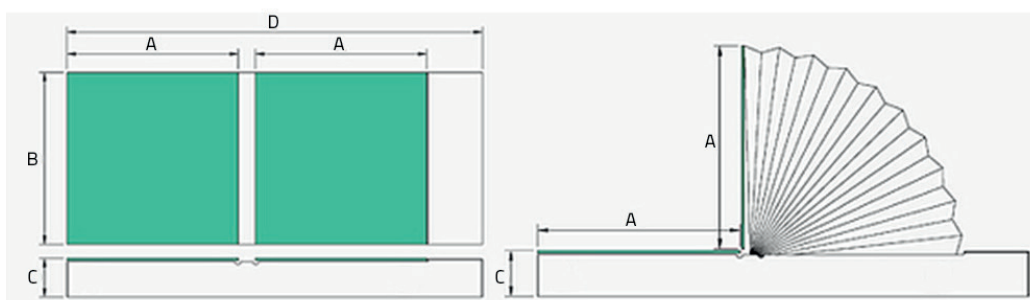


The mold turner from the KCE series is a device for safe turning of molds by 90°. The device allows you to turn the molds into weighing 40 tons. This turner is driven by a hydraulic unit with its own oil circulation. The hydraulic unit is driven by an electric motor.

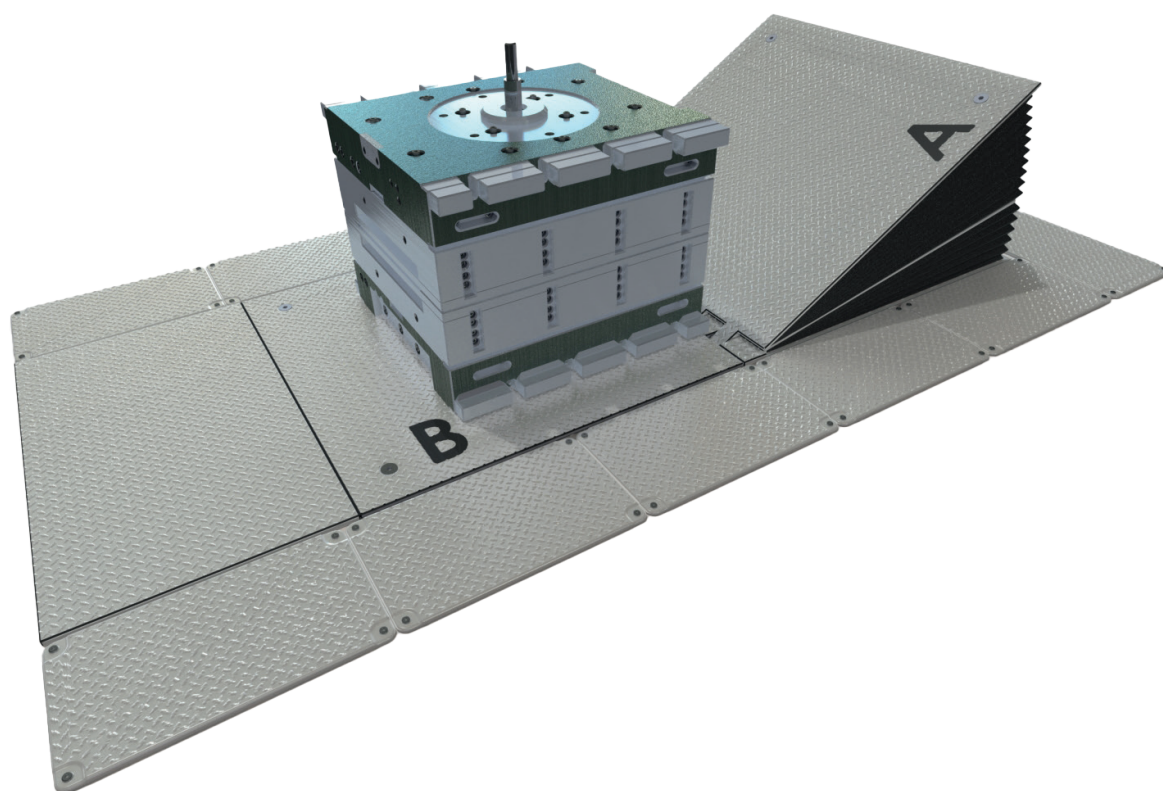
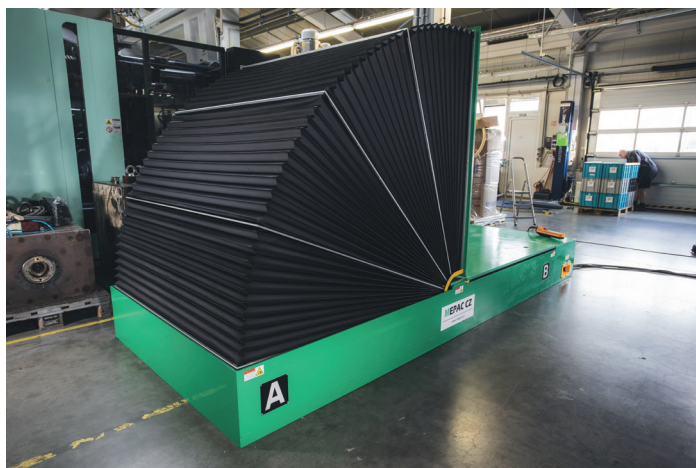
FEATURES AND BENEFITS

- compact flat design
- type KCE-4020 (load capacity 40 tons) is only 450 mm height
- space and operating cost savings
- stabilization mechanism
- simple control
- efficient use of space
- easy handling of the entire device
- the work surface can also be used for assembly work on molds

TECHNICAL PARAMETERS



Model	Loadspace („A“ x „B“, mm)	Overall Dimensions („B“ x „C“ x „D“,	Load Capacity (t)
KCE-0510	1000 x 1000	1000 x 275 x 2650	5
KCE-1012	1200 x 1200	1200 x 350 x 3000	10
KCE-2016	1600 x 1600	1600 x 400 x 3950	20
KCE-3018	1800 x 1800	1800 x 450 x 4450	30
KCE-4020	2000 x 2000	2000 x 450 x 4800	40



Hydraulic Damped Turner- series KCP / KCH



Type KCP

The mold turner from the KCP series is a device for safe turning of molds by 90 °. The device is working with hydraulic damping so that process of turning is really smooth and safe without undesirable shocks in critical positions. The manipulation of KCP type doesn't work without lifting device.

Type KCH

The KCH is driven by an electric motor so the whole device is self-sufficient. There is no need for other equipment.

FEATURES AND BENEFITS

- unique hydraulic damping
- KCH type has own driver for rotate
- space and operating cost savings
- stabilizing mechanism
- simple control
- efficient use of space
- easy handling of the entire device

TECHNICAL PARAMETERS

Model	Weight	Load Capacity	Bascet dimensions (mm)	Overall dimensions
KCP 5000	700	5	1200 x 1200 x 1200	2345 x 1410 x 1770
KCP 10000	830	10	1360 x 1360x 1200	2650 x 1410 x 2000
KCP 15000	1120	15	1600 x 1600 x 1500	3150 x 1760 x 2370



Drum Turner - series KCB



The mold turner from the KCB series is a device for safe turning of molds by 90 °. The device allows you to turn the molds into weighing 40 tons.

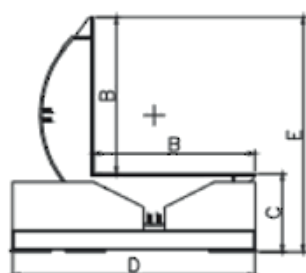
The device is completely driven by its own electric motor contents chain gear which provides a smooth turning process.

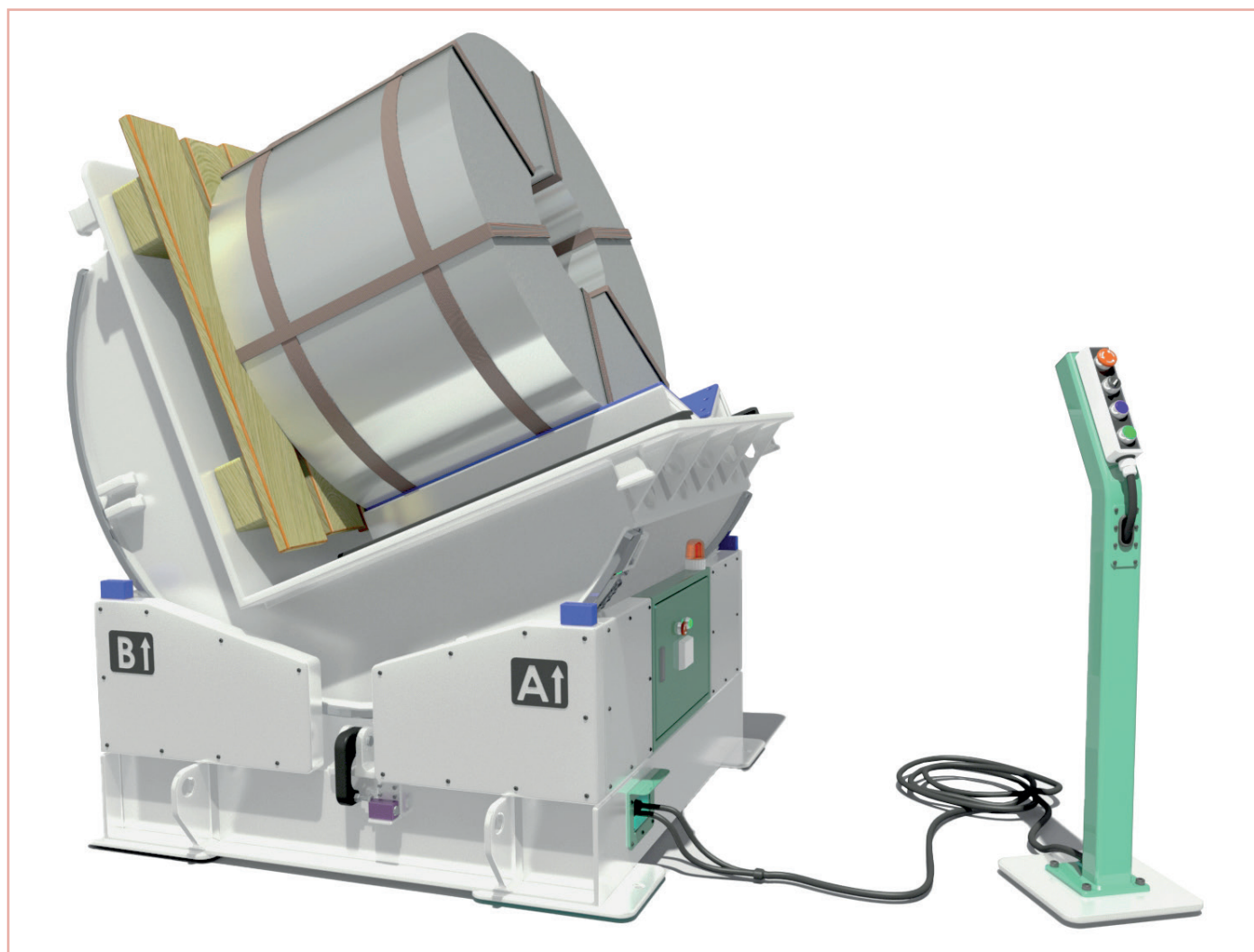
FEATURES AND BENEFITS

- space and operating cost savings
- small instalation dimensions
- stabilizing mechanism

TECHNICAL PARAMETERS

Model	Load Space (A x B mm)	Base Height (C mm)	width x lenght (A x D mm)	Height (E mm)	Load Capacity (t)
KCB-5	1200x1200	600	1200x1800	1800	5
KCB-10	1300x1300	650	1300x1900	1900	10
KCB-15	1500x1500	850	1500x2300	2300	15
KCB-20	1800x1800	950	1800x2700	2700	20
KCB-30	2000x2000	1050	2000x2900	2900	30
KCB-40	2200x2200	1200	2200x3400	3400	40







MEPAC CZ, s.r.o.	tel. /mob. /fax	e-mail
HEAD OFFICE TŘINEC Nebory 547 739 61 Třinec www.mepac.cz	tel.: +420 558 348 112 (shop) mob.: +420 603 515 357 (shop) mob.: +420 776 086 591 (workshop) mob.: +420 773 784 101 (workshop)	info@mepac.cz
BRANCH OFFICE VSETÍN Průmyslový areál Jasenice objekt 6 755 01 Vsetín	tel.: +420 571 417 771 mob.: +420 739 075 567 (workshop) mob.: +420 739 366 619 (workshop) mob.: +420 739 453 809 (shop) mob.: +420 608 710 904 (shop)	info.vsetin@mepac.cz
BRANCH OFFICE VRBNO Zlatohorská 648 739 26 Vrbová p. Pradědem	tel.: +420 554 725 305 mob.: +420 603 507 946 (shop) mob.: +420 739 204 755 (shop) mob.: +420 775 569 917 (workshop) fax: +420 554 725 035	info.vrbno@mepac.cz
BRANCH OFFICE POLAND Czechowice - Dziedzice	tel.: +48 910 085 519 mob.: +48 513 041 157	bak@mepac.cz

Foreign offices :

Slovakia - **MEPAC SK, s.r.o.**, subsidiary company, Kotešová, www.mepac.sk

Germany - **ToolTech Jena**, www.tooltech.de/

Portugal - **Quada Laser Portugal**, Marhina Grande